

KWS 90 SH



SYSTEM

KWS 90 OW SH 0 type

NOTE.

사용 가능 유리

복층유리 : 22mm

삼중유리 : -

진공유리 : 23.3mm

복층유리 : 1.4 Wm²/k

삼중유리 : - Wm²/k

진공유리 : 1.0 Wm²/k

REV.	DESCRIPTION	DATE
△		
△		
△		
△		
△		
△		

CODE NO.

PROJECT TITLE

DRAWING NAME

DRAWING BY

CHECKED BY

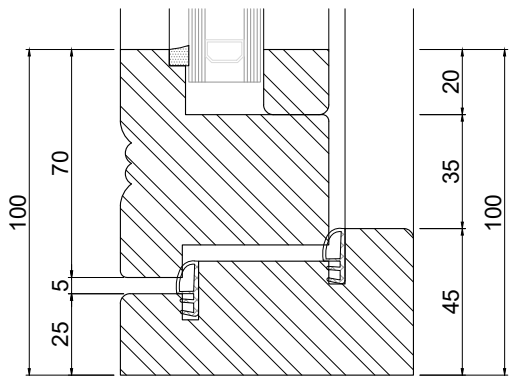
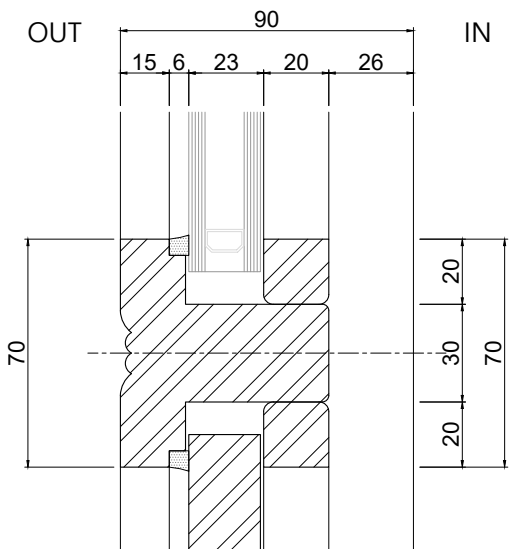
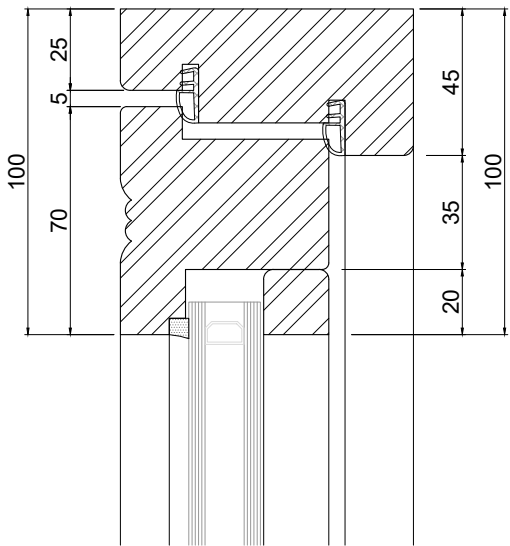
APPROVED BY

FILE NAME

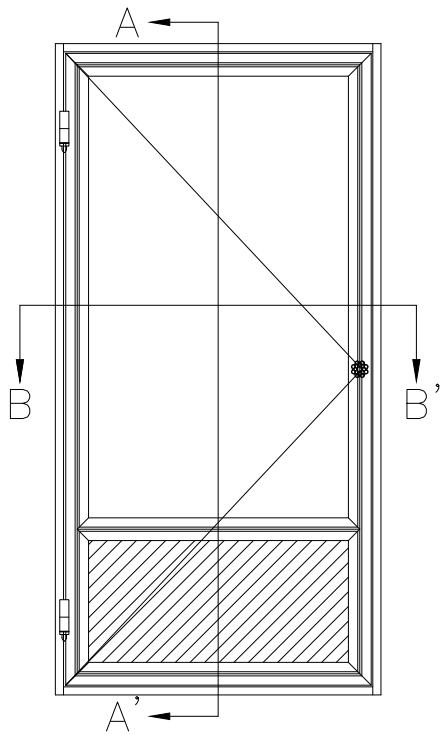
DATE

DRAWING NO

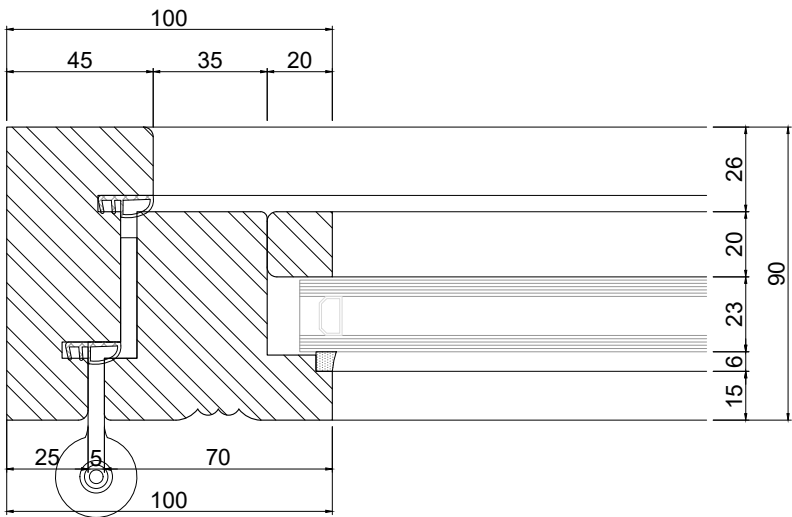
(주)이견창호
인천광역시 미추홀구 염전로 91 (도화동)
T 1522-1271 F (032) 760 0697



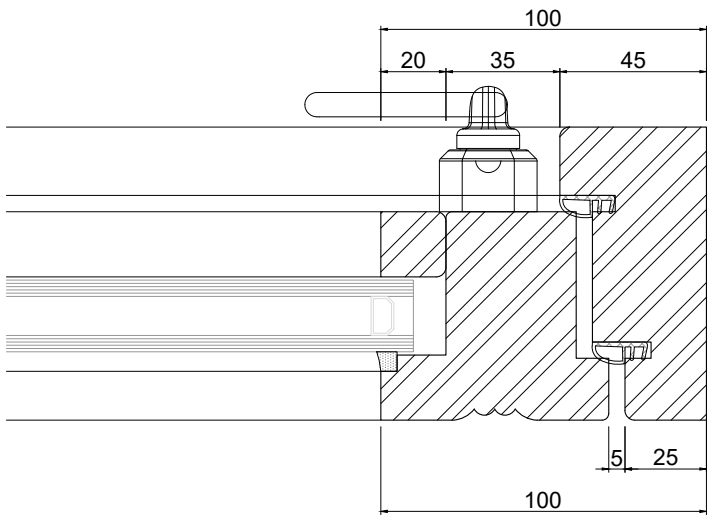
VERTICAL SECTION (A-A')



ELEVATION



HORIZONTAL SECTION (B-B')



자세한 제품 설명이나 추가적으로 자료가 필요하신 분은 이견창호 설계영업팀 담당자에게 문의 바랍니다.